

Student Achievement at Innovative High Schools 2009-10

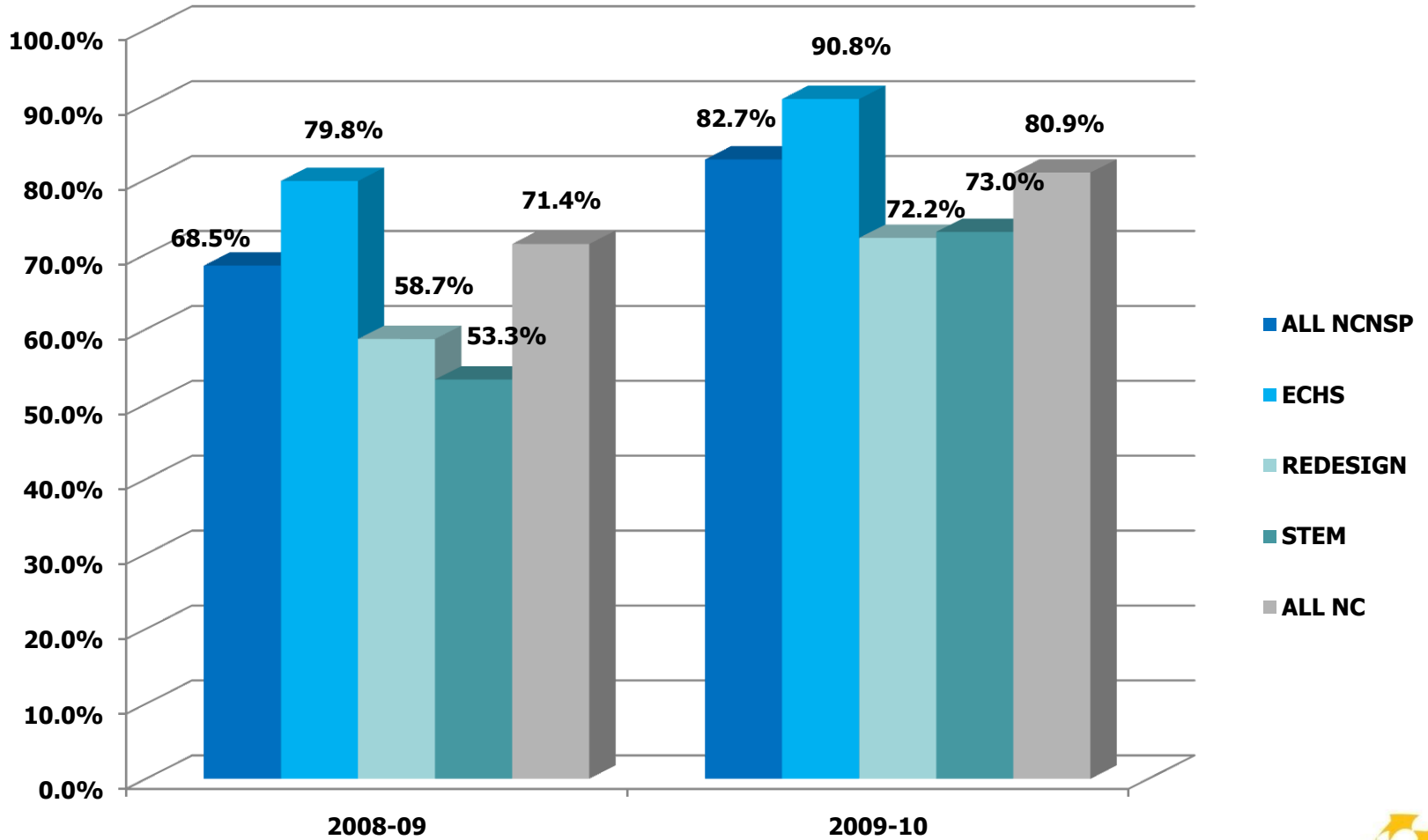


Student Achievement 2009-2010

- NCNSP on EOC composite realized a gain of 14.2 percentage points. ECHS 11-point gain, Redesign 13.5-point gain, and STEM 19.7-point gain.
- Even when the impact of re-test is considered, gains for NCNSP school types range from a 4-point gain (ECHS) to nearly a 13-point gain (STEM)
- All NC schools realized a gain of 9.5 points, or 2.5 points after re-test is considered



EOC Composite Pass Rates, 2008-09 vs. 2009-2010

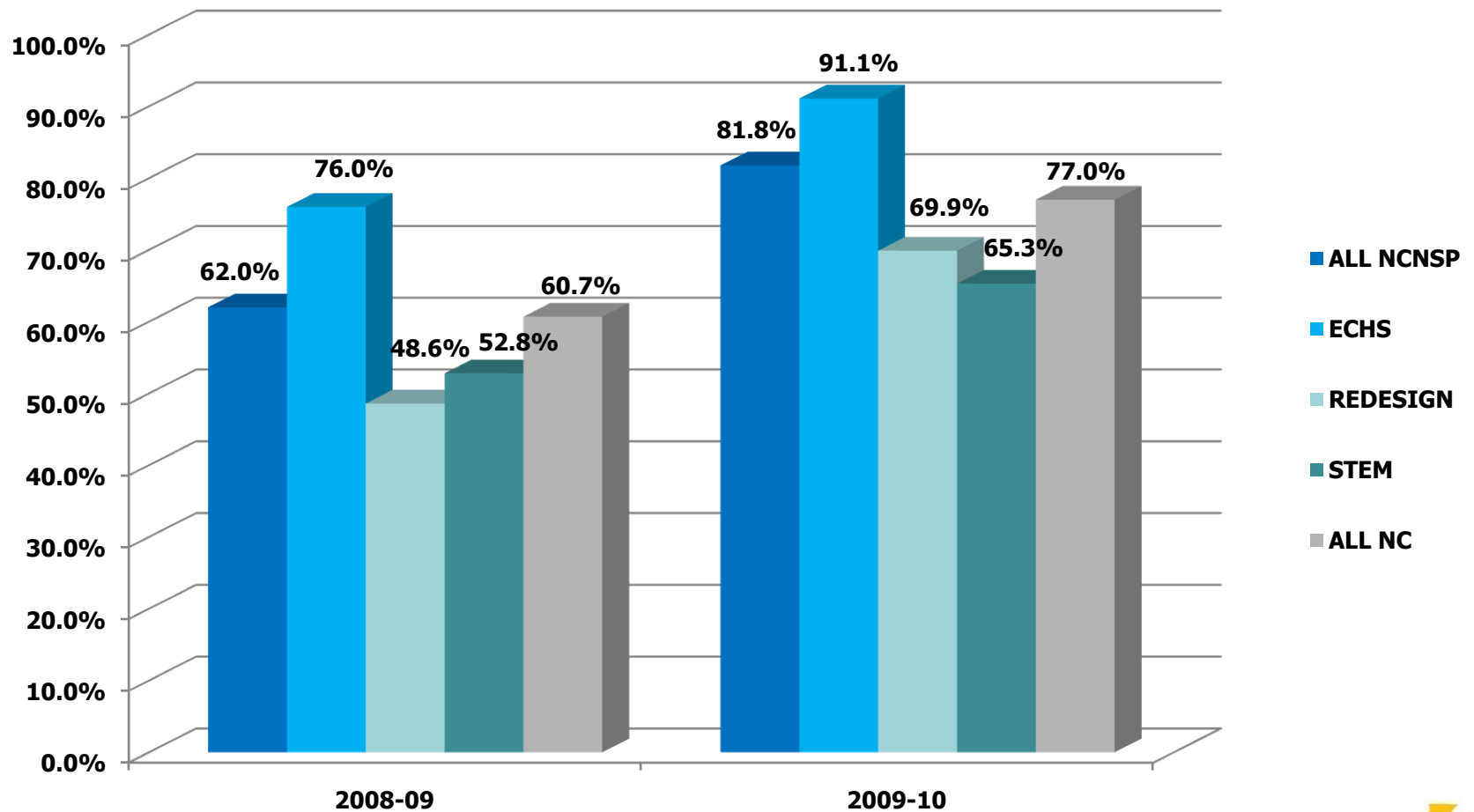


Student Achievement 2009-2010

- For Algebra I, a gatekeeper course, for all NCNSP schools combined, the percentage-point gain from 2008-2009 was 19.8.
- ECHS: 15.1-point gain; Redesign: 21.3-point gain; STEM: 12.5-point gain
- For all NC schools, the gain was 16.3 percentage points.



Algebra I EOC Pass Rates, 2008-09 vs. 2009-10

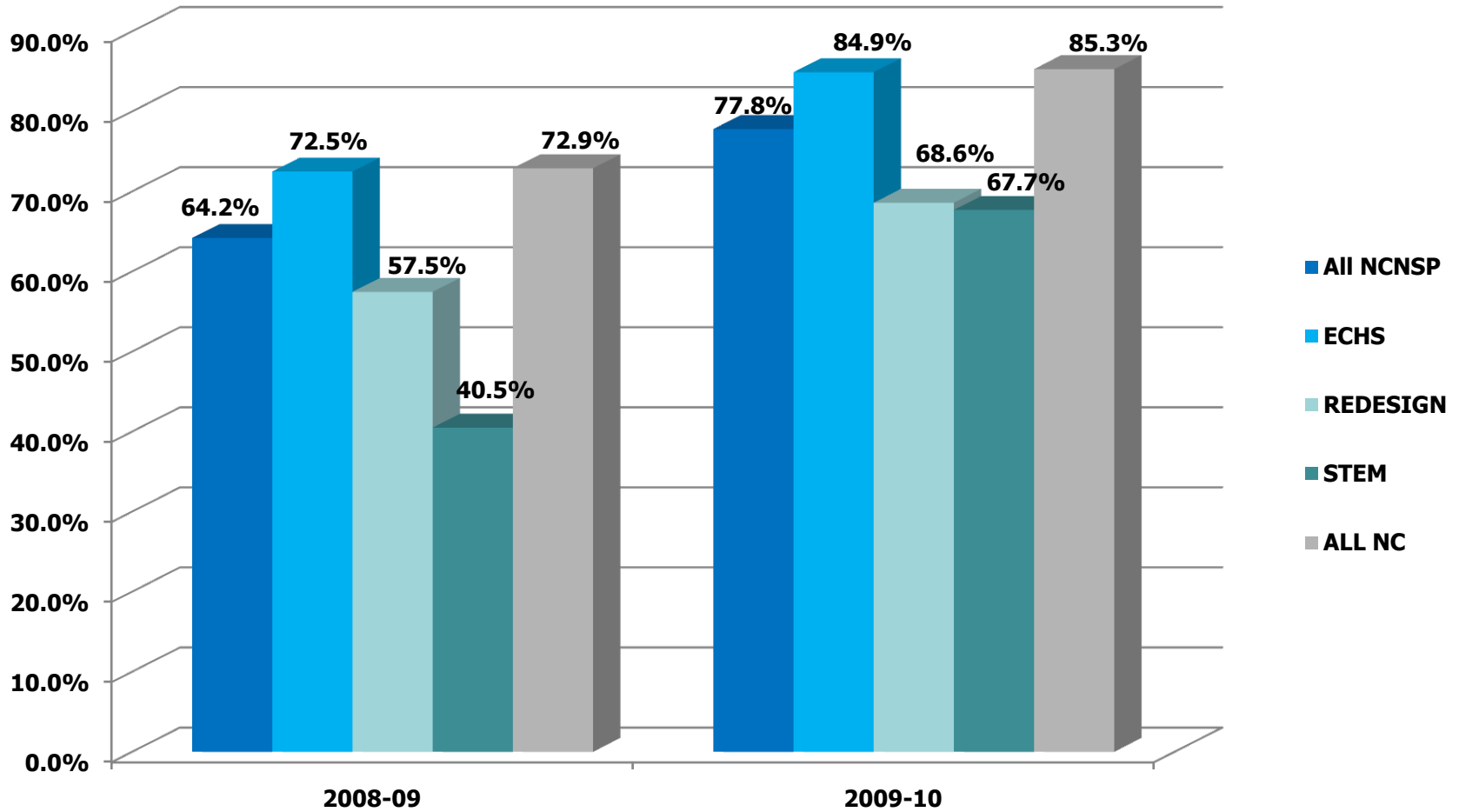


2009-2010 Student Achievement

- For Algebra II, a course of considerable rigor, for all NCNSP schools combined, the percentage-point gain from 2008-2009 was 13.6 points.
- ECHS: 12.4-point gain; Redesign: 11.1-point gain; STEM 27.2-point gain
- For all NC schools, the gain was 12.4 percentage points.



Algebra II EOC Pass Rates, 2008-09 vs. 2009-10



2009-2010

Student Achievement

- In all but one instance, across all tested areas, NCNSP schools outpaced the state in percentage point gains. In English I, ECHSs saw a gain of 6.8 percentage points, while the state as a whole realized a gain of 8.3 percentage points.
- STEM schools percentage point gains are 12.5 in Algebra I, 15.5 in English I, 18.6 in Civics, 21.9 in Biology and 27.2 in Algebra II



2009-2010 Student Achievement

- Graduation rates continue to climb
 - The mean rate for all NCNSP schools for 2010 is 83.8%; the median is 88.9%
 - The mean rate for ECHS is 89.9%; the median is 94.1%
 - The mean rate for Redesigned Schools is 81.4%; the median is 86.3%
 - The mean rate for all NC schools is 74.2%



2009-2010 Student Achievement

- NCNSP school students are achieving at levels not seen before
- STEM and Redesigned schools have shown strong growth
- Our students in greatest need of high support are showing that the NCNSP school models are serving them well and better than comparison schools

